

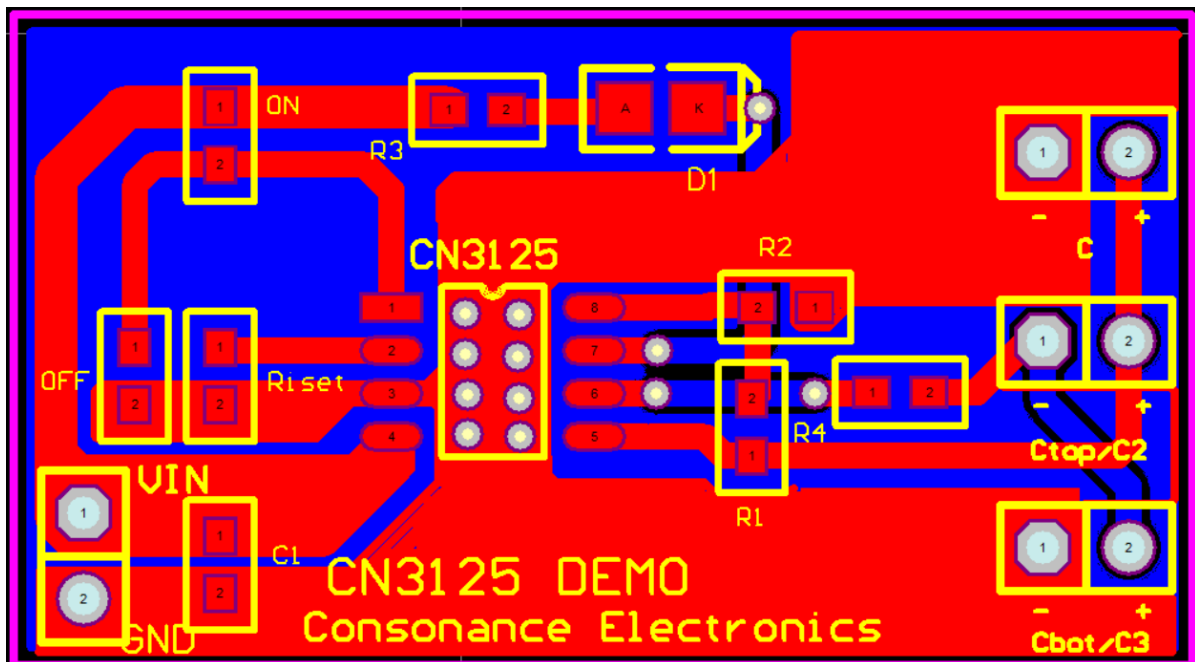
# CONSONANCE

## Quick Start the CN3125 demo board

### 1、 Overview

The CN3125 demo board is designed to meet the various needs of circuit debugging and most customers.

### 2、 CN3125 DEMO



### 3、 List and description of basic components

No.	Name	Description
1	VIN	Input power supply.
2	GND	Input power GND connection terminal.
3	C	Super capacitor connector. Use when charging one super capacitor.
4	C1	Input filter capacitor. Generally, 1uf-10uf capacitors are used.
5	Ctop/C2	When one super capacitor is charged, C2 is 1uF. When two supercapacitors are charged, the Ctop connection terminal is used.
6	Cbot/C3	When one super capacitor is charged, C3 is 1uF. When two supercapacitors are charged, the CBOT terminal is connected.
7	U1	CN3125.
8	R1	The maximum voltage of the supercapacitor sets the resistance. Refer to CN3125 technical specification for details.
9	R2	The maximum voltage of the supercapacitor sets the resistance. Refer to CN3125 technical specification for details.
10	R3	Current limiting resistor of charging indicator. 330 ohm to 1K ohm resistors are generally used.
11	R4	Use when charging 2 supercapacitors. The resistance is 100 ohm.

---

12	Riset	Maximum charging current setting resistor. Refer to CN3125 datasheet for details.
13	ON	Charging enabling terminal.
14	OFF	No charge control terminal.
15	D1	Charge indicator LED.